



PRINT  
QUALITY  
CONTROL **P** **Q**  
**C**

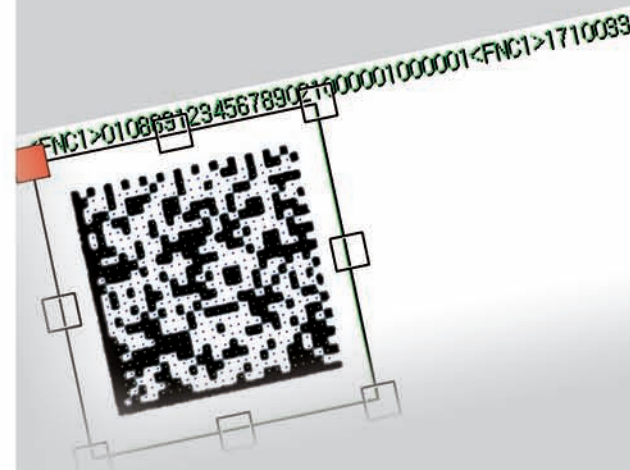
#### PRINT QUALITY CONTROL

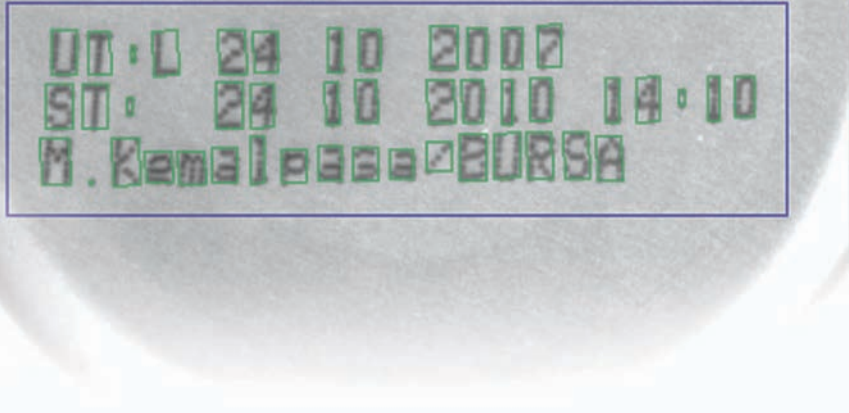
PQC checks the fixed and variable data of all printed material in a flexible manner, quickly and reliably. It decodes bar codes, two-dimensional codes and alphanumeric characters simultaneously.



**PQC** is designed to detect the presence of spots, smears, poor printing, light or dark lines whilst the OCR/OCV control detects fonts that are missing, mismatched or different as compared to the learning conditions.

The firmware inside each camera decodes bar codes, two-dimensional codes and alphanumeric characters simultaneously.



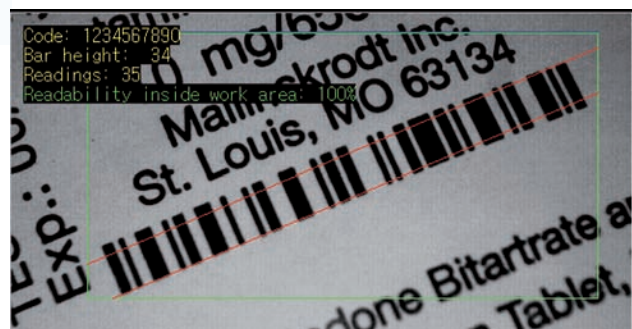


## PRINT QUALITY CONTROL



### FEATURES AND BENEFITS

- Embedded technology-based industrial solution: the intelligent camera runs all the processings through its own real time operating system, without Windows and hard disk, thus ensuring utmost reliability.
- Quick analysis of cleartext codes, one- and two-dimensional bar codes.
- Automatic code search within widespread areas.
- Codification available for linear and 2D codes: PHARMA CODE, EAN 13, EAN 8, UPCA, UPCE, CODE 32, CODE 39, CODE 128, PHARMA ESTESO, CODE 2/5 INT, Pharmaceutical identification label, Data Matrix ECC200, RSS14, RSS Limited, RSS Extended, PDF417.
- Reading and recognition reliability with any type of print: laser or ink-jet, full or stippled character, and on different types of materials: cardboard, plastic, aluminum, dark font on light background and vice versa.
- Also reads traditionally colored codes not legible by laser scanners.
- Compensation of the vertical, horizontal and rotary translations ( $\pm 5^\circ$ ) of the strings to be checked inside the analysis window.
- Use of powerful correlation algorithms for the classification and verification of the fonts.
- Easy and user-friendly graphic user interface based on touch screen display controlled directly by the camera or resident in the machine PC, if installed.
- Conforms to standards 21 CFR part 11.
- Possibility of customizing checks and ad hoc function development.
- Availability of validation documents IQ, OQ, PQ.
- **PQC** is compatible with the Antares Vision network architecture and may therefore be integrated with all the traditional line controls such as carton inspection, blister inspection, thermoformed packaging inspection and variable data tracking systems.



[www.antaresvision.com](http://www.antaresvision.com)  
[info@antaresvision.com](mailto:info@antaresvision.com)

25030 Castel Mella (BS) Italy  
Via Roncadelle 70/A  
Tel +39 030 83 746 94  
Fax +39 030 51 099 58



[www.iasystemsworld.com](http://www.iasystemsworld.com)  
[sunil@iasystemsworld.com](mailto:sunil@iasystemsworld.com)

Industrial Automation Systems  
C1-204, Mridang, 'A' wing, Lokpuram,  
Thane (W) 400610 India  
Tel 91 22 40125557 - Fax 91 22 21716413